



Gruppo di Progettazione: "R.T.P."
Arch. Roberto Briganti

Ing. Carlo Conte

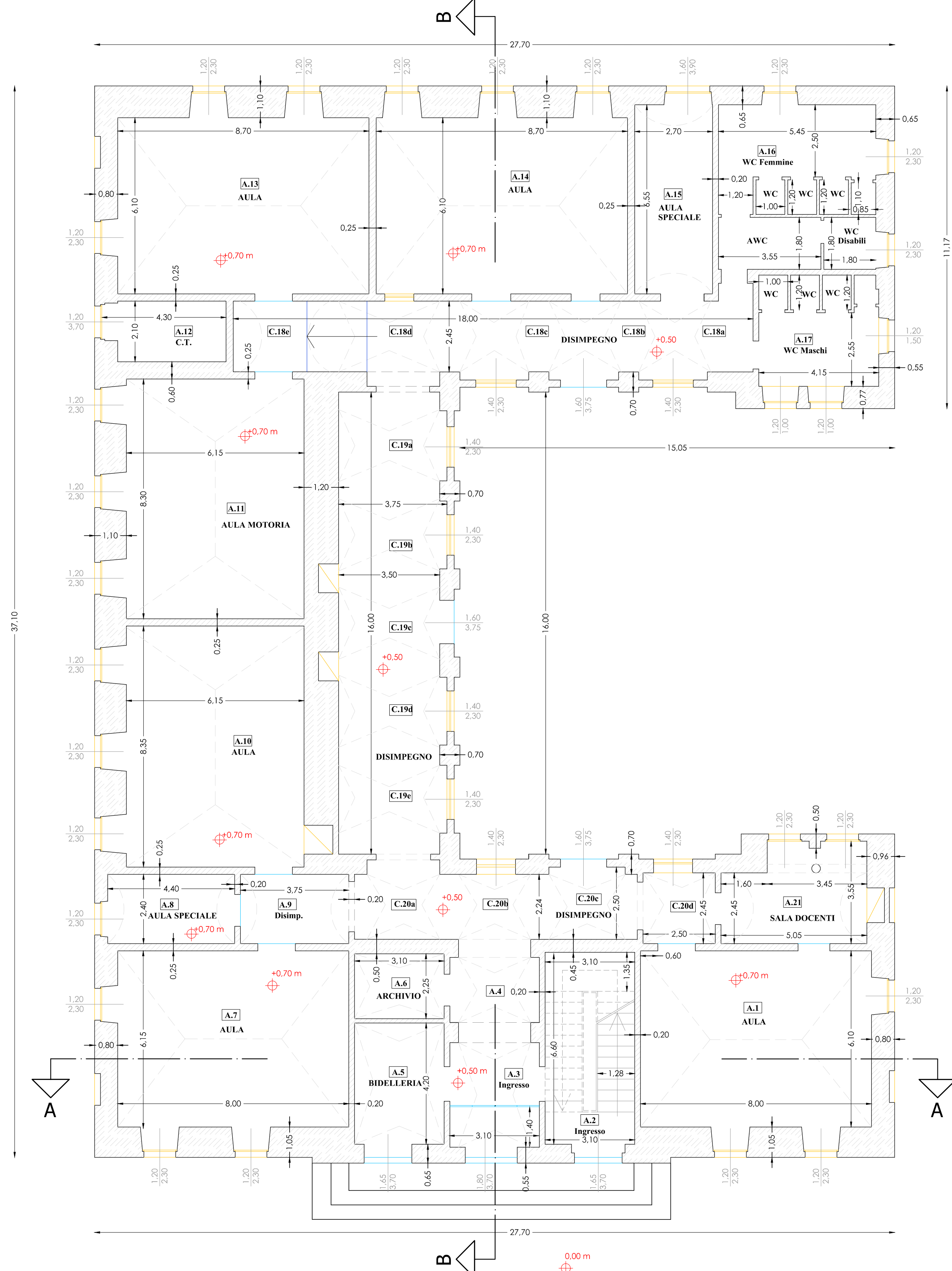
Ing. Emiliano Zampironi

Ing. Elisa Anna Sicuro

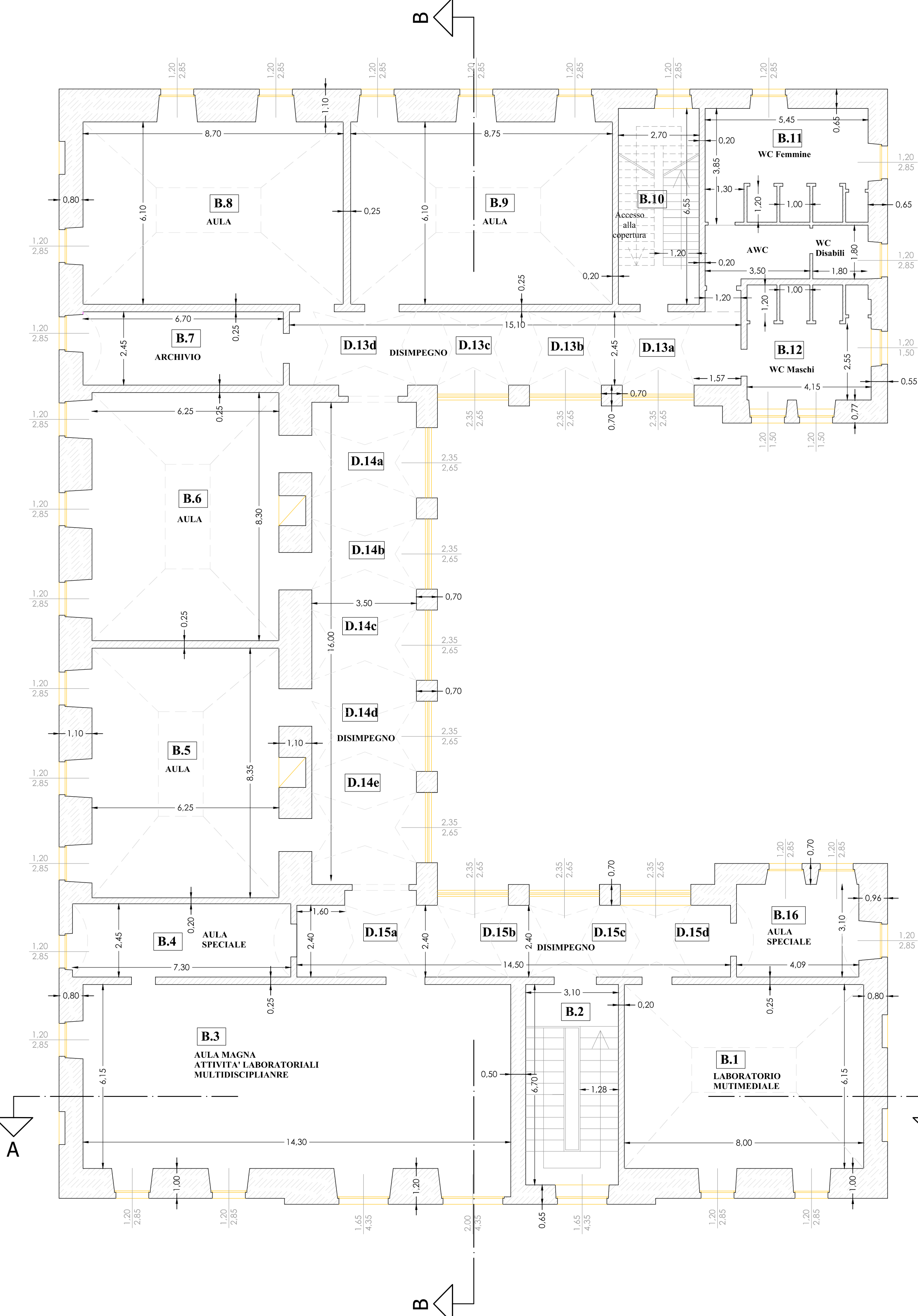
Ing. Emanuele Chiarello

Ing. Giancarlo Manni

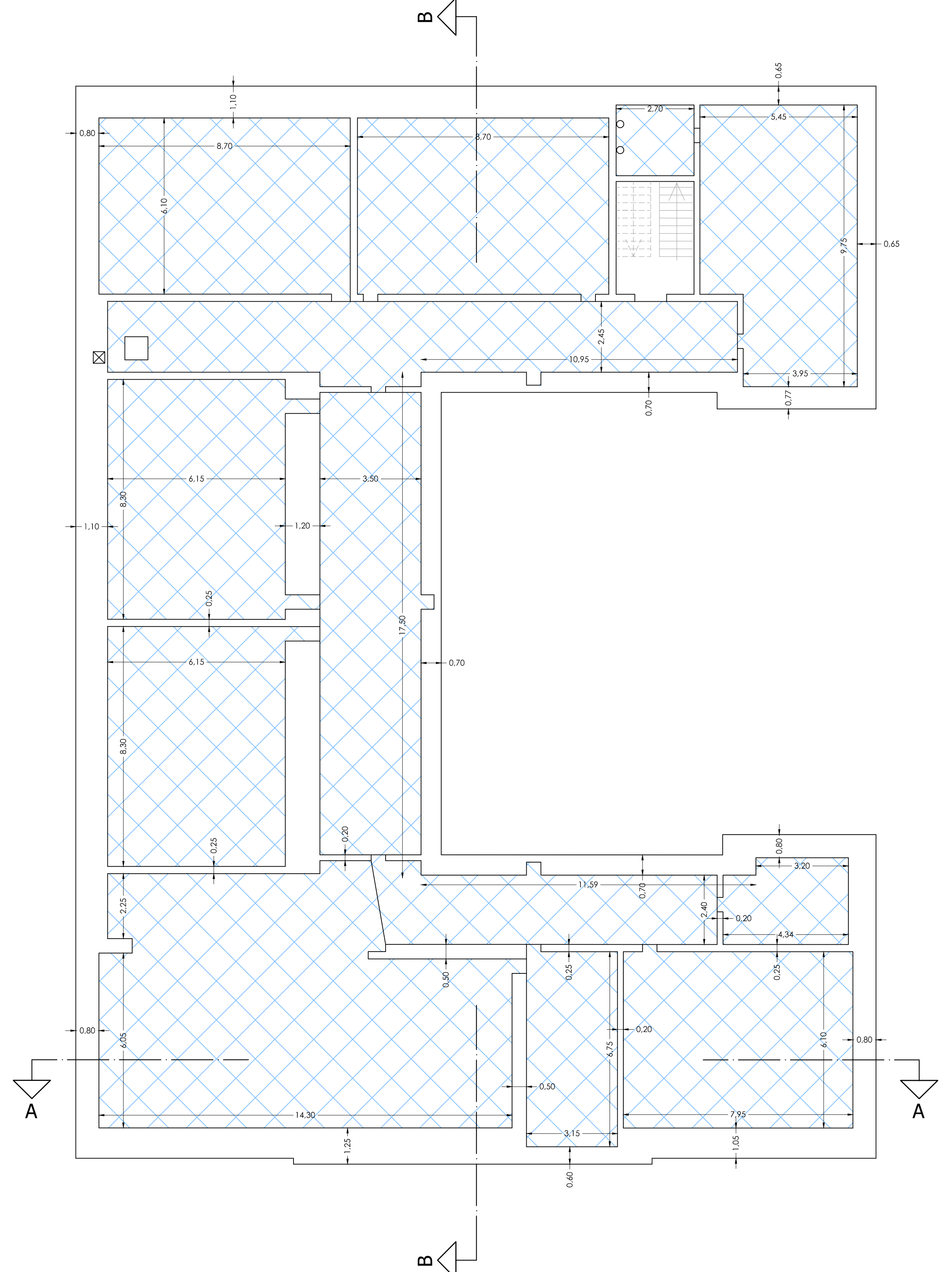
R.U.P.
Arch. Massimo Guerrieri



PIANO TERRA - RILIEVO
(scala 1:100)



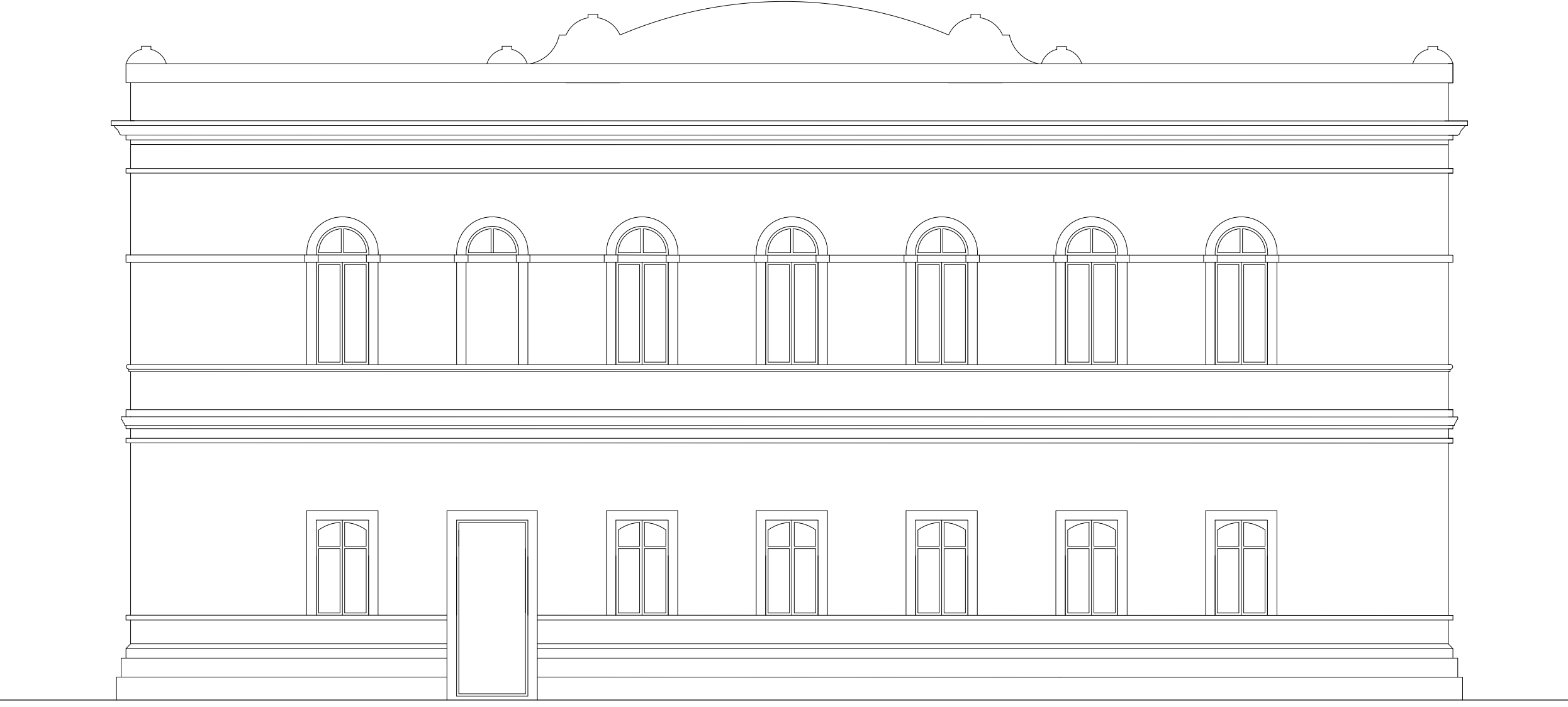
PIANO PRIMO - RILIEVO
(scala 1:100)



PIANO COPERTURE - RILIEVO
(scala 1:100)



PROSPETTO NORD - RILIEVO
(scala 1:100)



PROSPETTO SUD - RILIEVO
(scala 1:100)



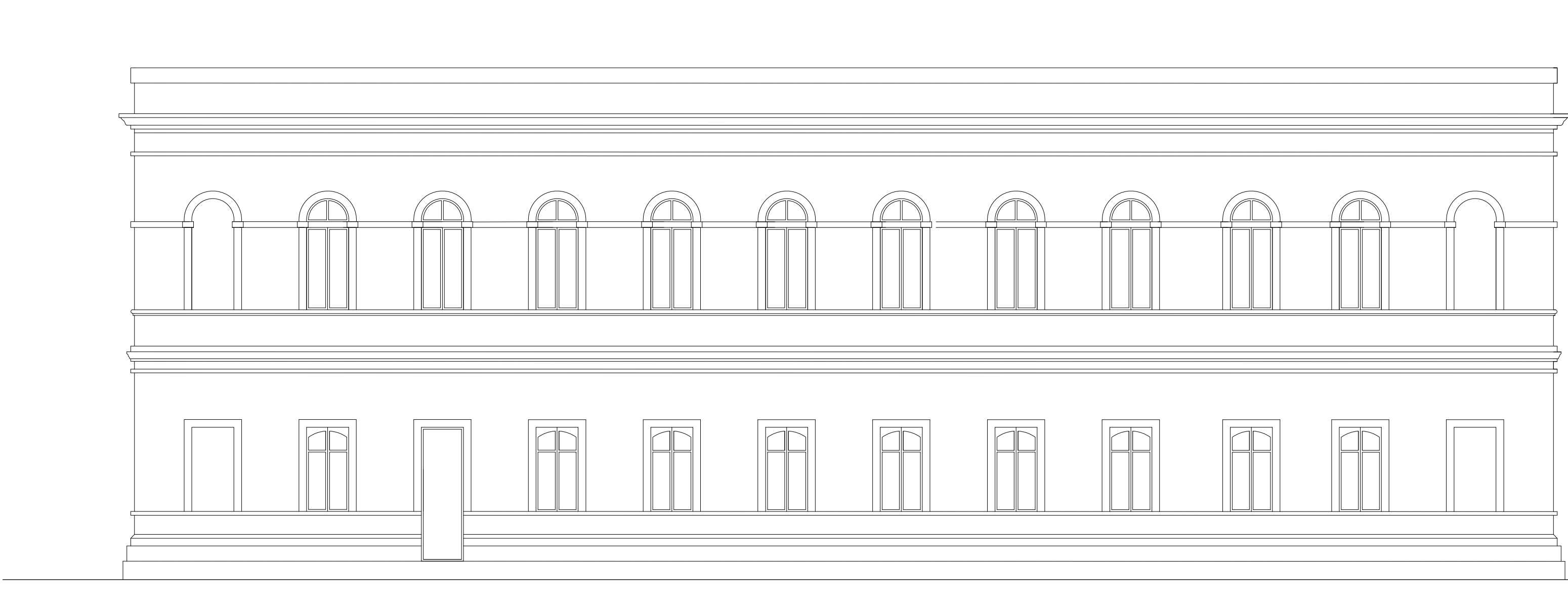
SEZ.A-A - RILIEVO
(scala 1:100)



PROSPETTO OVEST - RILIEVO
(scala 1:100)



SEZ.B-B - RILIEVO
(scala 1:100)



PROSPETTO EST - RILIEVO
(scala 1:100)